

Places to GO...

Exploring Wigan and Haigh Country Park

Town trail and public transport information

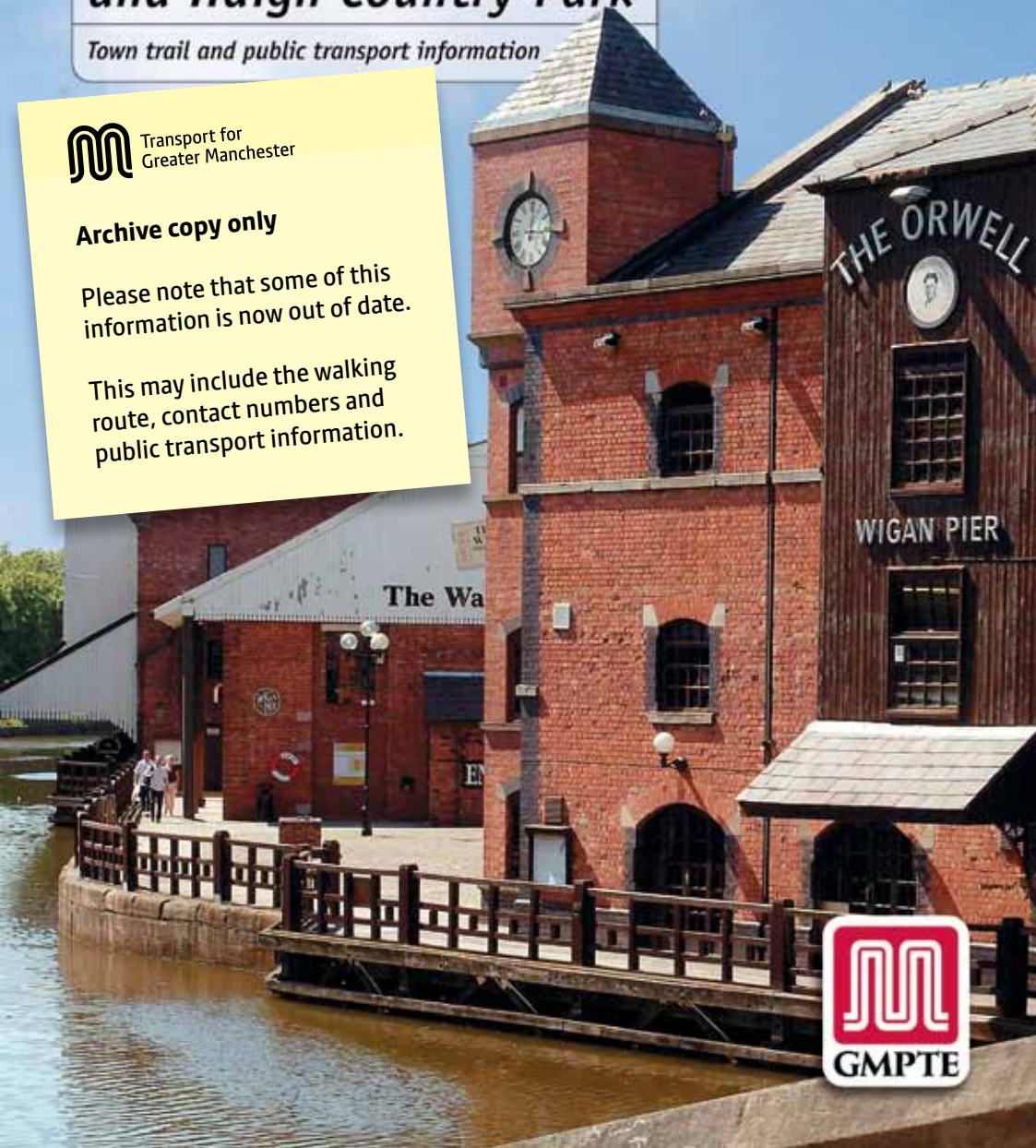


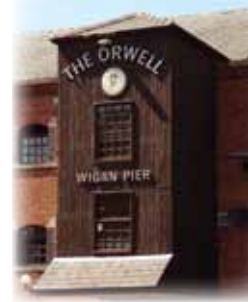
Transport for
Greater Manchester

Archive copy only

Please note that some of this information is now out of date.

This may include the walking route, contact numbers and public transport information.





Welcome to GMPTe's 'Places to Go' guide,

Exploring Wigan

Wigan Pier, Trencherfield Mill, the Leeds & Liverpool Canal, a history shop and a marvellous country park

Delve into the past in a town that's world famous for its industry, discover even older history or stroll in a huge country park - you can do it all by public transport.

George Orwell ensured that Wigan's name is known worldwide, but the town's history goes much further back than the Industrial Revolution. To the Romans their fort here was known as Coccium; recent archaeological discoveries have confirmed that a small town grew to supply and service this outpost. The English Civil War, too, left its mark, but it was with the Industrial Revolution that the town blossomed. Choose your walk and explore a traditional Lancashire town that attracts visitors from near and far.

It's easy to get to Wigan, with bus or train services to and from central Manchester and many other towns in Greater Manchester.

Make it an even better day out

Start your day by stepping onto a bus, train or tram.

You don't need a car to get out there and enjoy yourself! Simply step onto a bus, train or tram and you're on your way to a great day out, by yourself or with friends or family. The adventure begins from the moment you step out of the door.

Greater Manchester has an excellent public transport system that'll take you where you want to go quickly and easily. It's a fun way to get out and about, no-one has to drive so you can all enjoy the journey - and you don't have to worry about traffic jams, getting directions or parking problems. Better still, at the end of the day everyone is free to relax in the pub!

See inside for a handy guide to:

- | | |
|--------------------------------------|---------|
| - Planning your journey | page 10 |
| - Choosing and buying tickets | page 12 |
| - Getting more information | page 14 |

The road to Wigan Pier



One of literature's most instantly recognisable locations, Wigan Pier took its name from both a coal tippler and a Victorian Music Hall joke. As a tippler, coal was loaded from colliery wagons onto canal barges for onward transport to Liverpool's Docks or the hungry hearths and furnaces of South Lancashire. Today Wigan Pier plays just as important a role to the local economy but now it exports tourism not coal and cotton.

The Wigan Pier site is currently being redeveloped in order to breathe new life into the 8½-acre site so that it can once again attract visitors to wander and wonder at its heritage.

When redevelopment works are completed early in 2010, visitors will be able to enjoy a brand new heritage and learning centre within Trencherfield Mill. There will be an arts centre and having downed buckets of culture you will be able to sample the treats of a new towpath pub and restaurant.

However, there's no need to wait until then to visit and enjoy Wigan Pier.

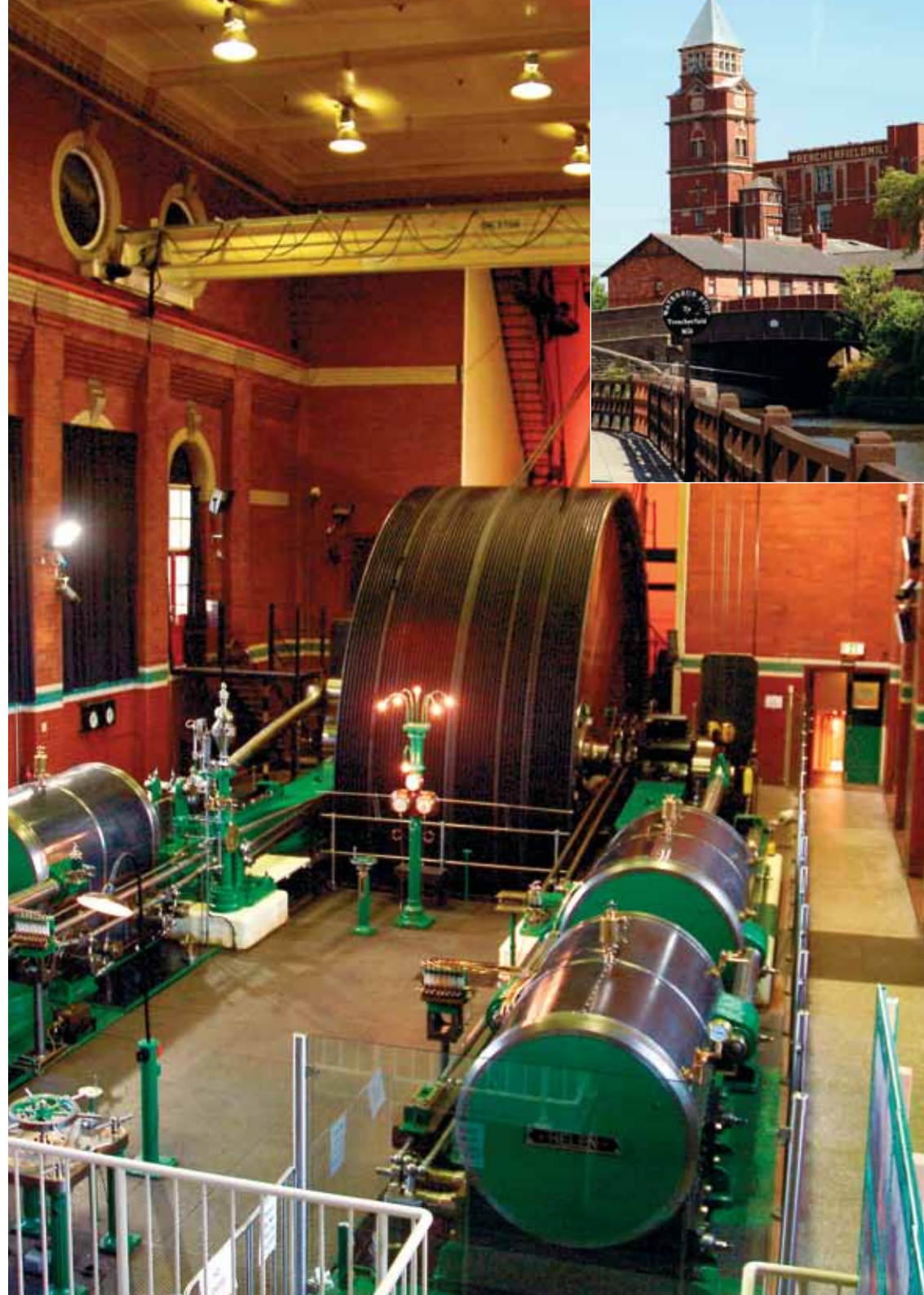
Just 5 minutes outside Wigan Town centre, Wigan Pier today still offers some of the best of the region's industrial heritage and Northern hospitality.

Standing proud alongside the Leeds & Liverpool Canal is Trencherfield Mill opened in 1907. Inside you will discover one of the wonders of the industrial world – The Trencherfield Mill engine; the world's largest working mill steam engine. The flywheel is taller than a double decker bus with a single decker on top. Have a go at blowing the steam whistle and learn of the engine's and the mill's history. (During redevelopment works the Engine House is open free to visitors on Sundays only).

There is the Orwell Pub, a place filled with real ale and real character. Maybe take on board refreshments there before taking a towpath walk. There are three very popular canal-side trails which start at Wigan Pier and take you in any of three directions introducing you to the abundance of industrial and natural heritage along the way.

For those who do not wish to journey far, visit the replica tippler or read about the Pier's history - its buildings and of the people who made it the international icon that it is today - on the new towpath based heritage interpretation installations.

*Wigan Pier is a short walk from the town centre along Wallgate. For Trencherfield Mill opening times phone Wigan Heritage Services on **01942 323666**. Or visit www.wiganpier.net. Copies of the walking trails are available from Wigan Tourist Information Centre. Phone **01942 825677**, or you can download them at www.visitwigan.com*





Wigan through the ages

As an alternative to the noise and bustle of Wigan Pier, you could visit another town centre venue that gives a much more peaceful and soothing review of the town's past. **The History Shop**, near the Town Hall and opposite the International Swimming Complex on Library Street, is the town's museum and art gallery. Alongside traditional Victorian oil-paintings you'll find a remarkable parish map of the borough, created over several years by the local communities in the form of a complicated and vast series of embroidered murals depicting local events, celebrations, locations and characters. The separate local history and heritage gallery has all you'd expect of a town museum, with excellent exhibitions of the long history of the area, from the formation of the coal reserves millions of years ago through the Civil War period to fascinating and detailed displays of the region's industries. The History Shop is in the former reference library where George Orwell did his research for elements of his renowned book *The Road to Wigan Pier*.

Admission is free. The History Shop is open from 10am daily except Sundays (but closed on Saturday afternoons). For more information phone 01942 828128 or visit www.wlct.org

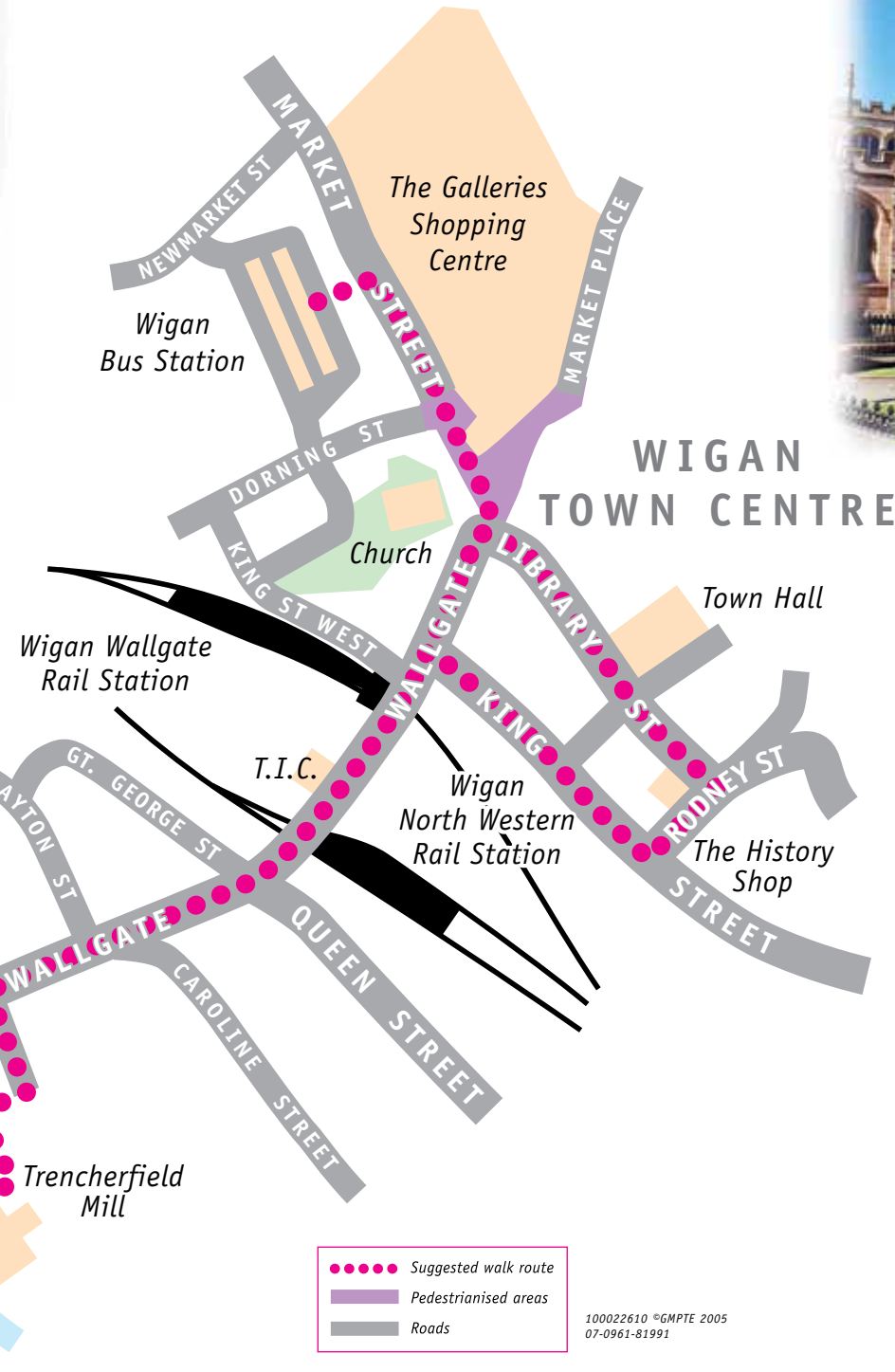
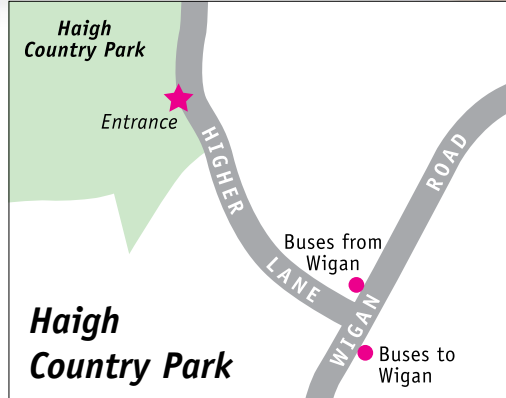
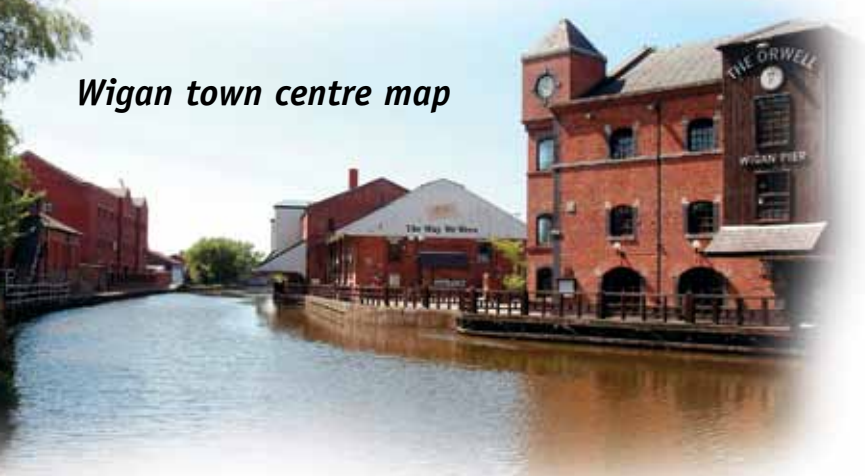


A wonderful country park

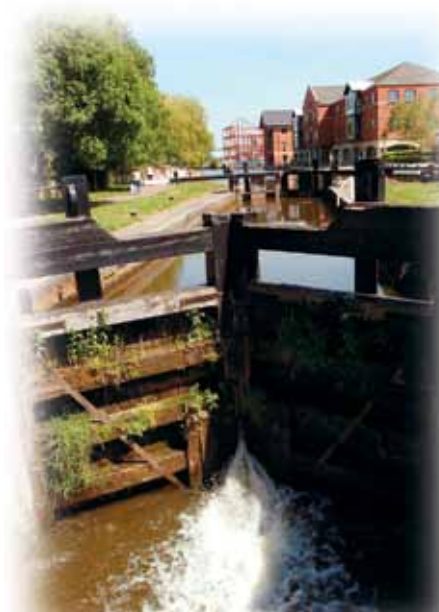
Haigh Hall is the family seat of the Earls of Balcarres and is now at the heart of the huge **Haigh Country Park**, just a short distance to the north of Wigan (*see page 10 for buses*). Whilst the Georgian mansion is rarely open to the public, the grounds and other buildings make this a terrific place to walk. Waymarked, self-guided woodland walks radiate from the old stable block, whilst a miniature 15 inch gauge railway makes travel easier and fun. There's a model village, crazy golf, putting, walled gardens and an arts & crafts centre as well as a cafeteria. If you've the energy and inclination, you can walk back from Haigh to Wigan town centre, either by following the towpath of the Leeds & Liverpool canal that passes through the park or through the plantation and woodlands - a guide leaflet from the information centre will help!

The Country Park is open every day. For more information phone 01942 832895 or visit www.haighhall.net

Wigan town centre map



Tourist Information
 Wigan Tourist Information Centre is situated at 62 Wallgate.
 For information phone **01942 825677** or visit www.visitwigan.com



- Suggested walk route
- Pedestrianised areas
- Roads

100022610 ©GMPT 2005
 07-0961-81991

Planning your journey

When you go by bus, train and tram you won't need to worry about driving unfamiliar routes, finding somewhere to park or keeping the kids entertained along the way.

You will all be free to relax and enjoy the views on your route.

Buses link Wigan directly to many other major towns in the north and west of Greater Manchester - the bus station is in the town centre. Trains run from two virtually adjoining town centre rail stations, Wigan North Western and Wigan Wallgate. There are regular daily services on local trains to Wigan from Manchester Victoria and Piccadilly and from Bolton.

If you're going to include a visit to Haigh Country Park then frequent buses 575, 576, 615 and 715 run between Wigan bus station and the bus stops on Wigan Road near Higher Lane. Follow Higher Lane to the lodge at the entrance to the park. For your return journey to Wigan catch the same services from the bus stop on the opposite side of Wigan Road.

Most public transport services run until around 11pm Mondays to Saturdays. On Sundays and public holidays services run less frequently and last services may finish a little earlier.

We've made general recommendations for your journey, based on starting points in different districts of Greater Manchester on the next page, but for details of exact times and routes please phone Traveline on **0871 200 22 33***

Starting and finishing from (area or district).	The information shown is for your guidance. Please phone Traveline 0871 200 22 33* for details of exact routes and times.
Bolton	Check if there is a convenient bus or train service direct to Wigan, otherwise catch a bus or train to Bolton town centre and make a direct bus or train connection there. The return journey is the reverse of above.
Bury	Check if there is a convenient bus service direct to Bolton for a connection to Wigan. Catch a bus or tram to Bury town centre then catch a bus from Bury Interchange to Bolton, making a connection to Wigan from there. The return journey is the reverse of above.
Manchester	Check if there is a convenient bus service direct to Wigan, otherwise catch a bus, train or tram to Manchester centre. Then catch a direct train from Manchester Piccadilly or Manchester Victoria to Wigan. The return journey is the reverse of above.
Oldham Rochdale	Catch a bus or train to Rochdale town centre. Then catch a train direct to Wigan. Alternatively catch a bus or train to Manchester centre. Then catch a train from Manchester Victoria or Manchester Piccadilly to Wigan. The return journey is the reverse of above.
Tameside Trafford Stockport	Catch a bus, train or tram to Manchester centre. Then catch a train from Manchester Piccadilly or Manchester Victoria to Wigan. The return journey is the reverse of above.
Salford	Check if there is a convenient bus service direct to Wigan. Alternatively check for direct bus connections from your nearest town. The return journey is the reverse of above.
Wigan	If you live near Wigan there will probably be a convenient bus or train service to and from the town.

*Calls cost 10p a minute from landlines, mobile and landline networks may charge an additional tariff.

Choosing and buying tickets

You'll enjoy great value when you travel by public transport.

Travel costs less 'off-peak' – after 9.30am on weekdays, or anytime at the weekends or on public holidays and so we recommend that you make the most of the bargain priced 'off-peak' tickets shown below.

Single tickets are available for every public transport journey and some companies also offer returns and their own 'day' tickets that are valid on their services only. If your trip involves changes or multiple journeys, there's an excellent choice of 'off-peak' tickets which allow you to travel throughout Greater Manchester, making as many journeys as you want. They last the whole day so you don't have to keep paying fares each time you travel – and these tickets can be used on nearly all companies' services.

Whichever ticket you choose for yourself, accompanied children under five travel free. A special fixed low fare called the 'concessionary fare' is available for under 16's and on trains and trams they pay approximately half fare. Child fares are also available for all the tickets featured except DaySaver.

National Concessionary Travel Passes are issued throughout England and allow free off-peak travel on bus services. GMPTE passes issued to residents of Manchester also allow free travel on trams and local trains in Greater Manchester at off-peak times and for reduced concessionary fares at other times.

An Under-16 Card is needed to travel on Metrolink if you are aged 13 to 15. These are available free and you can get an application form from GMPTE Travelshops or visit www.gmpite.com

For bus, train and tram

OFF-PEAK

DaySaver tickets are available for various combinations of bus, train and tram travel. Simply buy your ticket from the bus driver, rail station booking office (or the train conductor if closed) or Metrolink ticket machine before your first trip of the day.

- **DaySaver Bus only** £4.30
(also available before 9.30am for £4.60)
- **DaySaver Bus and Train** £5.30
- **DaySaver Bus and Tram** £5.80
- **DaySaver Train and Tram** £6.30
- **DaySaver Bus, Train and Tram** £7.00

For train only

OFF-PEAK

Rail Ranger gives you unlimited 'off-peak' travel on all trains in Greater Manchester for a whole day. Buy Rail Ranger from the station booking office or the train conductor if the booking office is closed.

- **Rail Ranger** Adult £4.00, Child £2.00

For tram only

OFF-PEAK

MetroMax gives you unlimited 'off-peak' travel on all Metrolink tram routes for a whole day. You can buy MetroMax from Metrolink ticket machines at all tram stops.

- **MetroMax** (off-peak price depends on boarding stop)
Adult £2.90 – £4.00, Child £1.10 – £1.70
Also available before 9.30am - Adult £6.00, Child £2.60
- **MetroMax Four-Adult** £10.00
- **MetroMax Family** £6.20 any day Monday to Friday, £5.00 Saturday or Sunday (up to three children, accompanied by one or two adults)
- **MetroMax Weekend** Adult £5.00, Child £2.50, Family £7.00

To travel further by bus, train and tram

OFF-PEAK

Wayfarer tickets are ideal if you're travelling further afield for the day. You can use them for travel throughout Greater Manchester and also parts of Derbyshire, Lancashire, Cheshire and Staffordshire. With a Wayfarer ticket you can travel by bus at any time and by train and tram after 9.30am Monday to Friday and all day at weekends and public holidays.

- **Wayfarer Adult** £10.00
- **Wayfarer Group** £20.00 (up to four people, including two adults)
- **Wayfarer Concession** £5.00 (aged 5-15 or 60 and over)

Available in advance from GMPTE Travelshops, staffed rail stations and tourist information centres in the Peak District. You cannot buy them on the bus, on the train or at Metrolink tram stops.

Season ticket holders

Don't forget if you have a Traincard, Countycard or County Bus Saver you can use it to travel throughout Greater Manchester. And if you have a Greater Manchester rail season ticket (for journeys between two Greater Manchester rail stations) you can travel by train anywhere in Greater Manchester at weekends and public holidays.

For more information about day tickets visit www.gmpite.com/daytickets or phone 0871 200 22 33 for a leaflet. (Calls cost 10p a minute from landlines, mobile and landline networks may charge an additional tariff).

All prices shown correct September 2009.

Getting more information

By phone (ideal when you're out and about!)

Buses, trains and trams: Phone Traveline on **0871 200 22 33*** (7am – 8pm Mon to Fri, 8am – 8pm Sat & Sun and public holidays) for information about bus, train and tram times and the tickets that will suit you best.

Trains: For up-to-the-minute information about the next train from any Greater Manchester rail station, simply phone **'How's my train running?'** on **0161 228 0322** and follow the instructions given. Our automated service will tell you what time the next train is and if there are any delays.

Buses: You can check bus times from most bus stops using your mobile phone.

- **Key in** the bus stop code on your mobile phone – the code is shown on the bus stop plate.
- **Text** the code to number **84268**.
- **Read** the text reply giving you timetable information for buses using your stop. (Service costs 25p plus the standard charge from your mobile phone service provider.)

Online

Full information about public transport services and a journey planner is available online at **www.gmpte.com**

In print

GMPTe produce a range of timetables and information about public transport which you can pick up at any **GMPTe Travelshop**.

By post

Ask for leaflets to be posted to you by phoning **0871 200 22 33*** saying which leaflet or timetable you require.

*Calls cost 10p a minute from landlines, mobile and landline networks may charge an additional tariff.

Connecting People with Places



FREE pocket guide

Greater Manchester has lots to offer when it comes to connecting people with places. Whether it's shopping, sight-seeing, visiting friends or just getting to and from work; you can do it using buses, trains and Metrolink trams.

Our pocket guide is crammed with useful tips and info such as:

- Planning your journeys
- Choosing the best tickets
- Free travel in the city centre
- Useful maps
- Information on the move

Order your copy today.

Phone: **0871 200 22 33**

(Calls cost 10p a minute from landlines, mobile and landline networks may charge an additional tariff. Lines are open 7am to 8pm Monday to Friday, 8am to 8pm Saturdays, Sundays and public holidays.)

or visit: **www.gmpte.com**



GMPTe

This is one of a range of GMPTE 'Places to Go' guides, giving you ideas for walks, attractions, places to visit and things to see in Greater Manchester and surrounding areas. The guides are completely **FREE** and each one gives you carefully researched, helpful information about the places featured, recommended routes for superb walks and details of how to get there and back by public transport.



If you would like other 'Places to Go' guides:

- **Call at a GMPTE Travelshop (at bus stations in Greater Manchester).**
- **Visit www.gmppte.com where you can order online.**
- **Phone 0871 200 22 33 and leave your details.**

(Calls cost 10p a minute from landlines, mobile and landline networks may charge an additional tariff. Lines are open 7am to 8pm Monday to Friday, 8am to 8pm Saturdays, Sundays and public holidays)

If you have any comments about this leaflet or suggestions for new guides please email publicity@gmppte.gov.uk or write to **Marketing Communications, GMPTE, PO Box 429, Manchester M60 1HX**

Disclaimer: The information provided in this guide has been carefully checked but GMPTE cannot accept responsibility for inaccuracies or errors.



PO Box 429
Manchester
M60 1HX

Tel 0161 244 1000
Fax 0161 244 1011

public transport information



0871 200 22 33
10p a minute from landlines
traveline.info

7am - 8pm Mon to Fri • 8am - 8pm Sat, Sun & Public Hols